

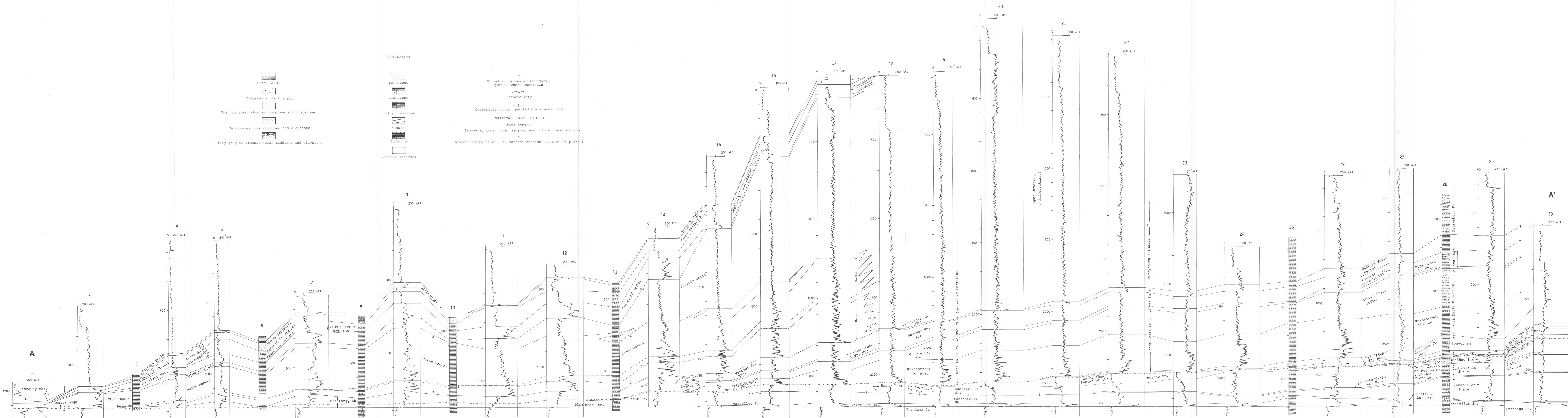
TENNESSEE

KENTUCKY

OHIO

PENNSYLVANIA

NEW YORK



\*Approximate conversion to API units.  
Conversion factors from Hillebrand (1979, p. 137).

STRATIGRAPHIC CROSS SECTION A-A' SHOWING THE DEVONIAN BLACK SHALES AND RELATED ROCKS IN THE WESTERN PART OF THE APPALACHIAN BASIN